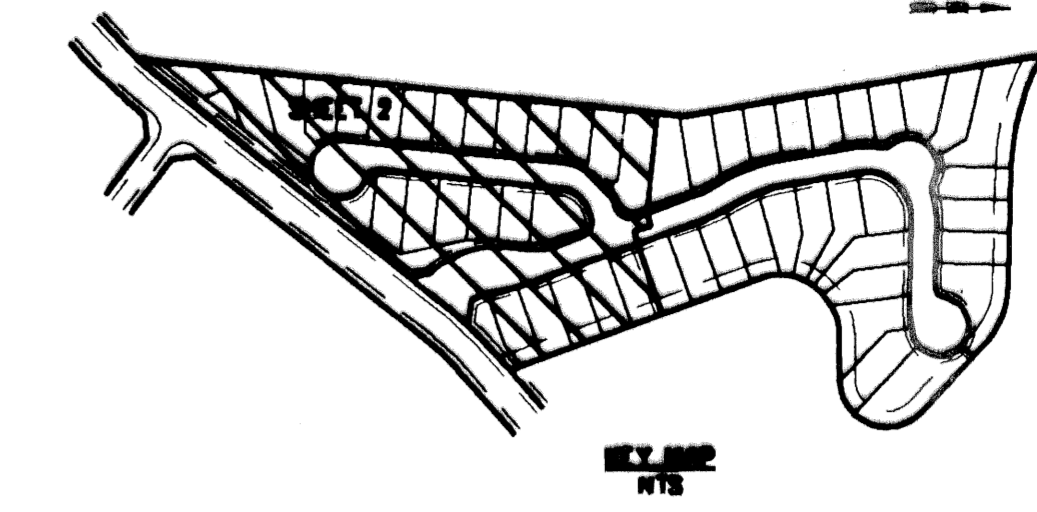
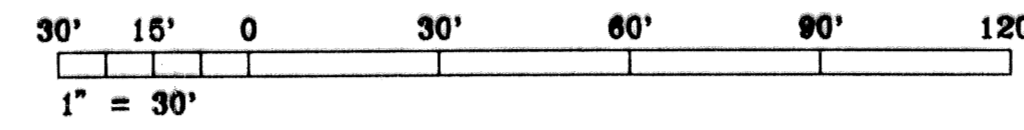


AVONDALE

BEING A REPLAT OF TRACT "K" OF PALM BEACH LAKES PLAT No. 2
AS RECORDED IN PLAT BOOK 44, PAGES 1 THRU 19
CITY OF WEST PALM BEACH, FLORIDA - PALM BEACH COUNTY, FLORIDA

APRIL 1994 SHEET 2 OF 3

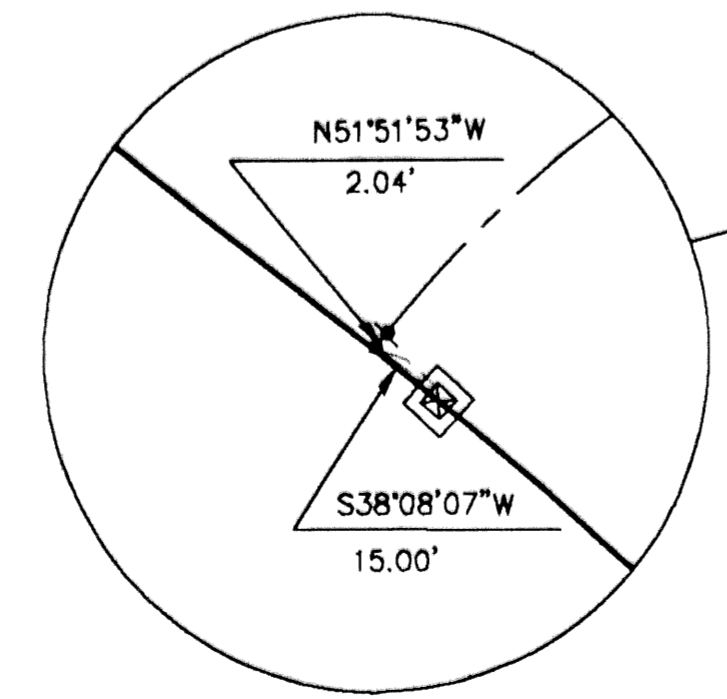
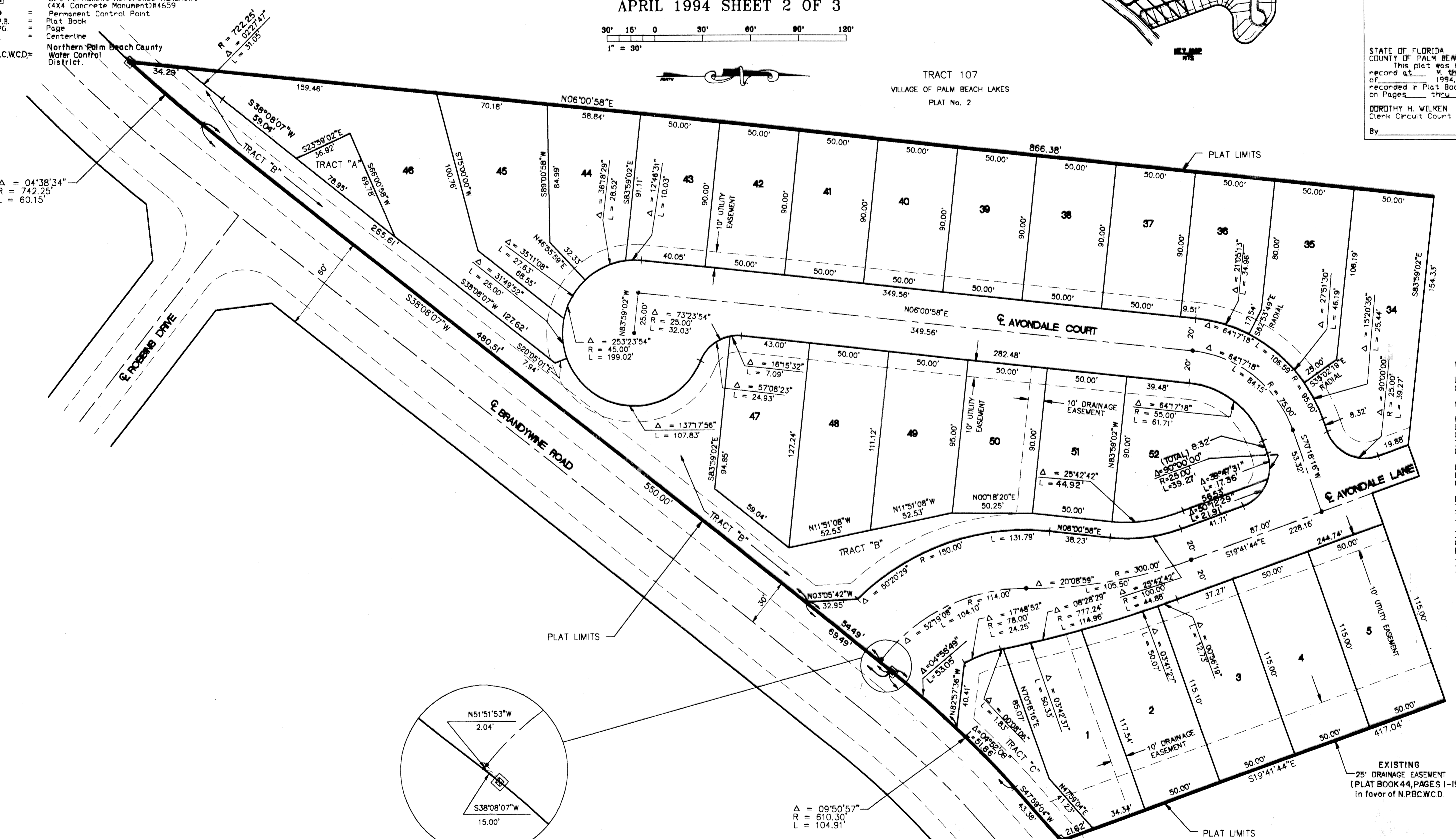


STATE OF FLORIDA
COUNTY OF PALM BEACH
This plat was filed for
record at M. this day
of 1994, and duly
recorded in Plat Book No.
on Pages thru
DOROTHY H. WILKEN
Clerk Circuit Court
By D.C.

LEGEND

- R = Radius
 - Δ = Delta
 - L = Arc Length
 - ⊙ = Set Permanent Reference Monument (4x4 Concrete Monument) #4659
 - = Permanent Control Point
 - P.B. = Plat Book
 - P.G. = Page
 - C = Centerline
- N.P.B.C.W.C.D. = Northern Palm Beach County Water Control District.

Δ = 04°38'34"
R = 742.25'
L = 60.15'



TRACT 7
VILLAGE OF PALM BEACH LAKES
PLAT No. 2

NPBWCD
WATER MANAGEMENT
TRACT 8
VILLAGE OF PALM BEACH LAKES
PLAT No. 2

Also Water Management Parcel No. 27;
a N.P.B.W.C.D. Parcel as described in Official
Record Book 4945 at Pages 71 THRU 131,
inclusive, Public Records of Palm Beach
County, Florida.

MATCH LINE SEE SHEET 3 OF 3

SUBDIVISION # Avondale
PAGE 56
BOOK 73 FLOOD MAP # -
FLOOD ZONE -
QUAD # -
SE ZIP CODE -
PUB. NAME C/OPB, TAZ 168
2/13/93

COMPUTED _____
DRAWN _____
CHECKED _____
APPROVED _____
JOB NO. 93-421

This instrument was prepared by
ALLAN FRANK OSUND P.L.S.
Gee & Jenson, Engineers, Architects, Planners, Inc.
One Harvard Circle
West Palm Beach, Florida 33409-1923